



Welcome to Westview GOLD!



Competitive & Non-Competitive Marching Bands

Concert Bands

Colorguard

Orchestra



How is Our High School Music Program Different from Middle School?

- **FIVE “SEASONS” to our Curriculum**
 - **August to Thanksgiving**
 - Comp Band & CG: “Marching Season” (comps/Poway Days Parade/football games/pep band)
 - Non-Competitive Band: Poway Days Parade, football games, pep band, Fall Non-Comp/Orchestra Concert
 - Orchestra: “Strings Only” season, fundamental training, Fall Non-Comp/Orchestra Concert
 - **December – WINTER SHOW**
 - Every student performs with their major ensemble and with their instrument section
 - **January to early April: Concert Festival Season**
 - At least two, sometimes three festivals for every ensemble, and our “Festival Awards Concert”
 - **April – Solo & Ensemble**
 - **Every student** performs a solo & in a chamber ensemble for adjudication
 - **Every student** has a chance to succeed and shine
 - **May – GOLD SHOW**
 - Similar to Winter Show, but themed
 - **Year End Wrap-up**
 - Coffee Concert if time allows (in class, casual concert with parents sitting IN the ensemble)
 - Graduation performance (band)

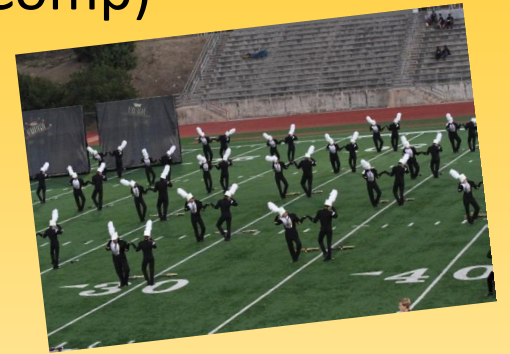
How is Our High School Music Program Different from Middle School?

- Concert Bands & Orchestra truly focus on **individual musicianship** to promote a superior ensemble
- Orchestra & Wind Ensemble play PROFESSIONAL LITERATURE and approach a professional performance level
 - Full conservatory style coaching staff, a pro for each instrument
 - Chamber Music in GOLD shows and curricular Solo & Ensemble Festival
- ALL STUDENTS learn organization, time management, & TEAMWORK
- EVERY STUDENT has a chance to shine at our Solo & Ensemble Festival
- RICHER COMMUNITY EXPERIENCE for each student group in WV GOLD
- PARENTS TOO!



How is Our High School Music Program Different from Middle School?

- **Marching Band is analogous to a major High School Sports Program**
 - Uniforms
 - Mandatory rehearsals (only some home game Fridays for Non-Comp)
 - Camp (required for Competitive members)
 - Saturday Field Show Competitions (Competitive only)
- **Professional coaching for ALL groups**
 - Additional coaching for Competitive marching/choreo
- **Requires funding far above what any school district can provide.**
 - Competitive Field Show season costs approximately \$24,000. Our coaching fund budget is roughly \$80,000.
- **The BIGGEST difference** – our program has around 200 contributing members! *No one “rides the bench!”*
 - Great sense of community, accomplishment, and pride



There are Four Main Funds:

- **I: PUSD District-Level Funding**

- Facility/Permanent needs only – band room speakers, music cabinets, classroom equipment; one time yearly unpredictable, unreliable allotment from PUSD

- **II: Coaching Fund**

- Funds our weekly coaching sessions for *every* instrument
- *100% parent donations*

- **III: Operating Fund*****

- Operating Expenses for entire program
- *100% fundraised by students and boosters*

- **IV: Camp Fund**

- Funds GOLD Camp for Band, Colorguard, & Orchestra



Coaching Fund – WHERE WE NEED YOUR HELP!

AKA Boosters Account *(within Westview Foundation)*

- Section Coaching – for ALL instruments in ALL groups including Non-Comp, Orchestra, and Color Guard
- Coaching is provided weekly all school year (if funding allows)
- Carry-over may be used for instrument purchases at the end of the school year if needed and approved by board
- **Funds come EXCLUSIVELY from Parent Donations (NO PUSD \$\$ whatsoever)**
 - This is what sets us apart from other schools/districts
- Necessary donations to ensure year-long funding:
 - Competitive Band/Colorguard: \$625 (this includes extra coaching and some show costs)
 - Non-Competitive Band/Orchestra: \$375 (instrument coaching costs only, not paying for show costs, marching coaches, etc)
- Westview Foundation is a 501c3 Non-Profit
 - Please check with your tax professional about potential deductions 😊
 - Please check with your work/corporations about matching donations 😊
 - Questions? Please contact Jessica Hou wvgoldtreasurer@gmail.com

MEET OUR COACHING STAFF!

Woodwinds & Colorguard



Kristen Kort
Flute



Briana Mossman
Double Reeds



Katrina Earl
Clarinet



Daniel Kamon
Saxophone



Sarah Abdulah
Colorguard

MEET OUR COACHING STAFF!

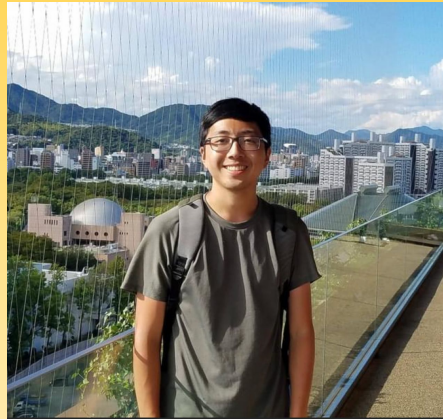
Brasses & Percussion



Tim Seager
Trumpet



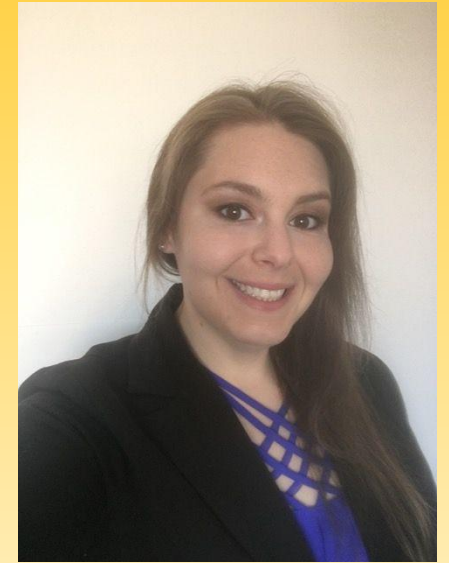
Andrew Young
French Horn



Darren Fujii
Trombone



Joey Ortiz
Tuba/Euphonium



Rudi Massman
Percussion &
Music Assistant

MEET OUR COACHING STAFF!

Orchestra



Ondrej Lewit
Violin



Paul Wang
Violin



Alyze Dreilling
Viola &
Bowings Coach



Bing Yan
Cello



Camellia Aftahi
Bass

Importance of Parent Donations for Band/Colorguard and Orchestra, Costs, and the Coaching Fund

- Section coaching – including strings, winds, brass, and percussion, critically enhances the quality and growth of our students; our parents' and community's dedication to fully funding this "conservatory style" approach is the #1 difference between the programs here in PUSD and other school districts
- Professional Orchestral Literature is often rental-only... or can cost upwards of \$700 per work!
- There are a multitude of additional costs for a championship level successful competitive band:
 - Music – the caliber of students is so high, we purchase professional, custom arranged literature
 - Professional Drill Writer – successful field shows are professionally charted specifically for our group
 - Marching/Visual/Percussion staff – an additional set of coaching staff for all members and an additional percussion instructor
 - Colorguard Uniforms – different every year to enhance the show
 - Backdrops, props, entry fees, transportation costs, uniform cleaning
 - **Approximately \$30k extra above other general facets of the whole program**
- No public school district can afford to fund a music program of the caliber present here and throughout PUSD. It simply costs more than the standard curriculum. **It's up to us** to be able to provide the resources our children deserve. They've worked so hard to get to this point, let's do our part to make sure they have the best experience possible!
- **IN SHORT, WHILE THERE ARE "NO FEES" TO PARTICIPATE IN WESTVIEW GOLD:**
 - **Competitive Band/Colorguard typically costs \$825 total per member for show costs, curriculum, coaching, and camp.**
 - **Orchestra and Non-Competitive Band cost \$375 for coaching** with an additional \$150 for optional GOLD Camp
 - **If donations don't come in, the Directors are left with no choice except to scale back what the program can offer**

II: BOOSTERS

WE NEED YOU!

GOLD Boosters – Who We Are

- All Volunteer – anyone can help, everyone should join!
- Help organize and support events throughout the year:
 - GOLD Camp
 - Host Fall Marching Band tournament and Spring Winterguard tournaments
 - Support moving uniforms, instruments, equipment for field shows, parades and home football games
 - Support concert events as necessary
 - Fundraisers
 - End of Year Banquet
- Generate parent financial support
- Generate parent volunteer support



Students

Boosters

Tournament

Directors

Fundraisers

Donations

Parent / Volunteers

Key Members of the 2023-2024 Booster Team

- President: Vincent Kramer
- VP of Events and Activities: Mary Anne Obedoza
- VP of Ways and Means: Kurt Griskonis
- VP of Volunteers: Seung Hurt
- VP of Communications: Jennifer Carr and Gail Verge
- VP Tournaments: Nathalie Le Floch
- VP Membership and Recruitment: Stephanie Galanos
- Recording Secretary: Xiaoyun Pan
- Treasurer: Jessica Hou
- Auditor: Evelyn Kwan
- Parliamentarian: Jennifer Carr
- Colorguard Representative: Myrin Glover
- Non Comp Representative: Xiaoyun Pan
- Orchestra Representative: Gail Verge
- Band Dad Lead: Ryan Broley

How Much Does GOLD Need From You?

- **Competitive Band & Colorguard**

- **\$625 for 2023-2024**

- 72% coaching, 28% show funds
- We cannot produce a competitive season for your child without this donation
- These donations are tax deductible through the *Westview Foundation (PayPal or checks to Westview)*

- **\$200 for GOLD CAMP**

- MANDATORY for Competitive Band/Colorguard. Outside of school year, must be paid separately, MAY be tax deductible depending on your child's age (ask your accountant)

- **Orchestra & Non-Comp Band**

- **\$375 TOTAL for 2023-2024**

- Coaching Donation ONLY
- We cannot provide weekly coaching without this donation
- This donation is tax deductible through the *Westview Foundation (PayPal or checks to Westview)*

- **\$150 for GOLD CAMP**

- While we highly encourage all band and orchestra students to attend camp, it is entirely optional for Orchestra & Non-Competitive Band

VOLUNTEER HOURS

We need each family to volunteer 15-20 hours to provide the events, experiences, and curriculum that Westview GOLD regularly enjoys!

Band Dads	400	WV Festival	6
Gold Camp	100	Winterguard Tournament	153
Home Football Games (4)	240	Awards Concert	18
Uniform Fittings	60	Winterguard Tournaments (7)	120
Poway Parade	45	S&E + Command	100
Tournaments x 6	600	Jazz Festival	8
Fall Concert	30	Gold Show	140
Mattress Sale	24	Banquet	100
Field Tournament	245	Coffee Concerts	4
Winter Show	170	Board Meetings (10)	100

That's approximately **2660 Hours** of volunteer time to make our program run!!

Westview GOLD Boosters 2023-2024

Did you know it costs . . .

- \$35,000 – each Semester for Coaching
- \$17,000 – for one Competitive Marching Band Show
- \$12,000 – for a New Concert Tuba (*Gold desperately needs several*)
- \$ 1,500 – for Operating Costs for Winter QB Gold Show
- \$ 1,000 – to Sponsor one Comp/CG and one NonComp/Orch Student

Check # _____

Amount \$ _____

check goes to treasurer / u keepform

Did you know that these costs are **NOT COVERED** by taxpayers' money or the school district?
The **Westview GOLD Boosters** raises money to help cover the costs of our high-quality music program.
We ask that every family consider joining Boosters.

There are several levels you can choose from, just select your preferred level.

GOLD Membership - \$500	SILVER Membership - \$250	BOOSTER Membership - \$30
<ul style="list-style-type: none"> ● Cooling towel or license frame ● A 24hr window ahead of the 2 Week Early access to the Gold and Winter Show tickets ● Access to preferred seating at Gold and Winter Show (max 6 seats) ● Name in GOLD Tournament program ● Name in concert programs ● Two entries into "opportunity drawing" at the Winter Show ● VIP Parking at GOLD Tournament ● Sponsorship of one non Sweepstakes unsponsored Trophy at the GOLD Tournament 	<ul style="list-style-type: none"> ● Cooling towel or license frame ● 2 Week Early access to the Gold and Winter Show tickets ● Name in GOLD Tournament program ● Name in concert programs ● One entry into "opportunity drawing" at the Winter Show ● VIP Parking at GOLD Tournament 	<ul style="list-style-type: none"> ● Cooling towel or license frame ● 1 Week Early access to the Gold and Winter Show tickets ● Name in GOLD Tournament program <p style="text-align: center;"><small><i>*Full Coaching donation plus Booster membership gets you 2 weeks early access to concert tickets at Gold and Winter Shows</i></small></p>

Full Coaching Donations must be met to qualify for Gold and Silver status

Remember to check with your employer about Company Matching, to help your donation go farther.
Company matching cannot be used to reach Booster donation levels.

CHECK PAYABLE: WESTVIEW FOUNDATION or <http://westviewgold.org>; choose support, choose booster, choose reg & pay online, complete the Westview Gold Booster Membership Application -you will be taken to another link to pay, so remember to go back to complete & submit the application

Name: _____ Donation Amount: _____

Student's Name: _____ Remain Anonymous? Yes No

Email: _____ Phone: _____

Other Sponsorship Options: ___ Sponsor a Band/Orchestra Student = \$____ Alumni Donation \$ _____

___ Sponsor a Sweepstakes Tournament Trophy = **\$350** ___ Sponsor a 2nd or 3rd Place Tournament Trophy = **\$150**

___ Sponsor a 1st Place Tournament Trophy = **\$250** ___ Sponsor a 4th Place Tournament Trophy = **\$10**

III: CRITICAL DETAILS

Yes, there'll be much more later, but this is all you probably need (or want) right now!

GOLD Information Sources

What to do first:

- Register NOW - for communication throughout the year
- Join Facebook group (Westview Gold) - link on website
- Sync calendar - Click + on calendar link



Westview GOLD Tournament Info for Home Page **Home** Events Ensembles Support GOLD New Parents More

Parent Info Night

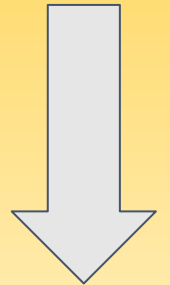
ABOUT WESTVIEW GOLD

Westview Gold is the award winning music program for Westview High School, located in San Diego California. Consisting of Competitive Marching Band, Orchestra and Concert Bands, Westview Gold instills a love of music in

- GOLD Registration
- New Parent Info
- GOLD Camp
- Orchestra Camp
- Marching Season Uniforms
- Concert Season Attire

GOLD Information Sources

- 3 Parent Meetings Per Year
- Announcements also on website, reviewed daily in class
- Facebook (Westview GOLD)
- “Weekly” Info Sheets via Email
- Section Parent Notes via Email



Westview GOLD Tournament Info for Home Page **Home** Events Ensembles Support GOLD New Parents More

Parent Info Night

ABOUT WESTVIEW GOLD

Westview Gold is the award winning music program for Westview High School, located in San Diego California. Consisting of Competitive Marching Band, Orchestra and Concert Bands, Westview Gold instills a love of music in

- GOLD Registration
- New Parent Info
- GOLD Camp
- Orchestra Camp
- Marching Season Uniforms
- Concert Season Attire

First-Time Student/Parent Disclaimer

It is not unusual for parents and students new to the program to miss some information along the way. It gets significantly easier once you've been through a year with us, promise! (There's a glossary for a reason)

We do so much, communication is a challenge:
too much info/too little info, etc.

Summer/Fall Events *at a glance*

GOLD Camp (open to ALL students, COMP/CG required)- August 5, 7-12

Fall Season (August through Fall Break)

COMP/NON COMP/CG: Football games, Poway Days Parade (Sept 9)

COMP/CG: Tuesday Night Rehearsal 6-9pm

COMP/CG: Saturday rehearsals/competitions (see calendar)

COMP/CG: Sectionals Wednesdays OR Thursdays, see calendar

ORCH/NONCOMP: Orchestra & Fall Concert Band Concert, Mid-October

Winter GOLD Show: All groups, one week in December.

CONCERT PERFORMANCE ATTIRE

ALL BAND & ORCHESTRA STUDENTS, REGARDLESS OF GENDER:

- Black button down long sleeve dress shirt or blouse
- Black slacks
- Black dress shoes, black socks, black belt
 - *This is worn by everyone at Winter & Spring shows and worn to Concert Festival performances by Concert & Symphonic Bands*

When to obtain: Immediately

CONCERT PERFORMANCE ATTIRE

WIND ENSEMBLE (audition only) and **ORCHESTRA** (strings):

Boys: Black tuxedo (jacket, pants, black bow tie and cummerbund), black bow tie, black dress shoes. Suggested: 5pc notch lapel Tuxedo package (Item 79B) Black, \$94. www.formalfashions.com

Girls: Empire style black gown with small scoop neckline and $\frac{3}{4}$ sleeves, black stockings, black dress shoes. Suggested: Style 4853AX (\$67) at www.formalfashions.com

When to order: Orchestra ideally needs this for their October Fall Concert. Wind Ensemble please obtain by December. Allow 3-4 weeks if ordering from Formal Fashions.

GOLD MARCHING BAND Uniforms

Marching Band: August - November

COLORGUARD: Entirely Coordinated with Coach Sarah

BAND Casual Uniforms are worn for school events, parades, football games.

Consists of: WVGold polo (available on GOLD website), khaki shorts (available online or at local stores), black ankle socks, black marching shoes (order online). WVGOLD or another black sweatshirt for cooler evenings.

Competitive Evening Rehearsals: black athletic clothing

Formal Marching Band Uniforms are worn for football games and tournaments.

Everyone will be fitted at band camp in August. Under the uniform, wear solid **black t-shirt, black leggings/compression shorts, LONG black socks (purchase these garments NOW if your child doesn't already have them)**

Marching Shoes: Drillmaster or Super Drillmaster. Dinkles may also be worn. Order from americanband.com, bandshoppe.com, bandshoesonline.com.

Summer Percussion Information

FRONT ENSEMBLE INSTRUCTOR: Rudi Massman

BATTERY/DRUMLINE INSTRUCTOR: Greg Wheeler

Auditions are typically required for both Battery and Front Ensemble, and are based on not only displayed technical ability, but also attitude and team cohesiveness. Students who do not audition into a drumline position may be placed in the front ensemble. You are highly encouraged to explore both options so instructors have a clear idea of what will be the best fit and placement is at the sole discretion of the Directors, not the Coaches. Students not auditioning into a Competitive Band spot on either Battery or Front Ensemble will still rehearse with the competitive percussion section during school.

Summer Schedule: See GOLD Calendar for details

Colorguard Information

- **INSTRUCTORS:** Sarah Abdulal, Nebai Chavez
- **BOOSTER REP/Parent Coordinator:** Myrin Glover

- **SUMMER SCHEDULE:** June 13-15, June 27-29, July 3, July 11-13. See GOLD Calendar for more information, most sessions 9am-12:30pm.

- **SOCIAL MEDIA:** Facebook: WV Colorguard. All information will be posted here. Instagram: @wvcolorguard. Join for great photos and other fun stuff!
- **UNIFORMS: TBD** (will be selected over the summer to fit the show theme)

THANKS FOR COMING! “ACTION ITEMS”

- **REGISTER** on website by June 15th
- **PAY** for GOLD CAMP, if attending
- Make your **ANNUAL FAMILY DONATION**
- **OBTAIN** concert black, marching band black undergarments, etc as soon as possible
- **ORDER** Casual Uniform & Marching Shoes (if applicable)
 - *Band Moms have some items to try on tonight!*
- **SYNC AND GLANCE OVER CALENDAR**